



**We Fight for the health, education and financial stability
of every person in every community we serve.**



**United Way of
Manatee County**

2015-2016 Community Report

Thank you for your interest in United Way of Manatee County. As you may know, we are constantly gathering input from our community stakeholders to help our board guide our initiatives. Based on that input, we are proud to introduce a campaign that will help our region thrive for many years to come.

Our 2016-2017 campaign, the “Manatee Mind Trust” initiative, will focus on children from birth to age nine. United Way of Manatee County is bringing together leading philanthropists, employers, volunteers and community partners to support programs for healthy birth and childhood, financial stability for families, and, importantly, helping children bridge the critical transformation from “learning to read” to “reading to learn” by age nine—a key factor in predicting graduation rates and future earnings.

The Manatee Mind Trust initiative supports and expands upon United Way’s local leadership with the national “Campaign for Grade-Level Reading” and regional “Suncoast Campaign for Grade-Level Reading,” which focuses on five factors in the challenge to help children thrive: school readiness and early learning; school attendance; summer learning; healthy readers; and parent/family engagement.

We are pleased to share this community report with you as we review last year’s accomplishments, and we look forward to partnering with you to support and expand our community’s #thrivability.



Brilliant Minds. Bright Future.

Manatee Mind Trust

A collective, child-focused vision for our county's greatness

United Way of Manatee County is bringing together the most influential people and organizations in our community, leveraging the national power of United Way to develop the brilliant minds that will determine the future success of our county. By supporting health, education and financial stability for our county's children from healthy birth up to age nine, we will sow the seeds for Manatee's long-term success. You can help.

Visit uwmanatee.org today to learn how.



Community Impact Highlights

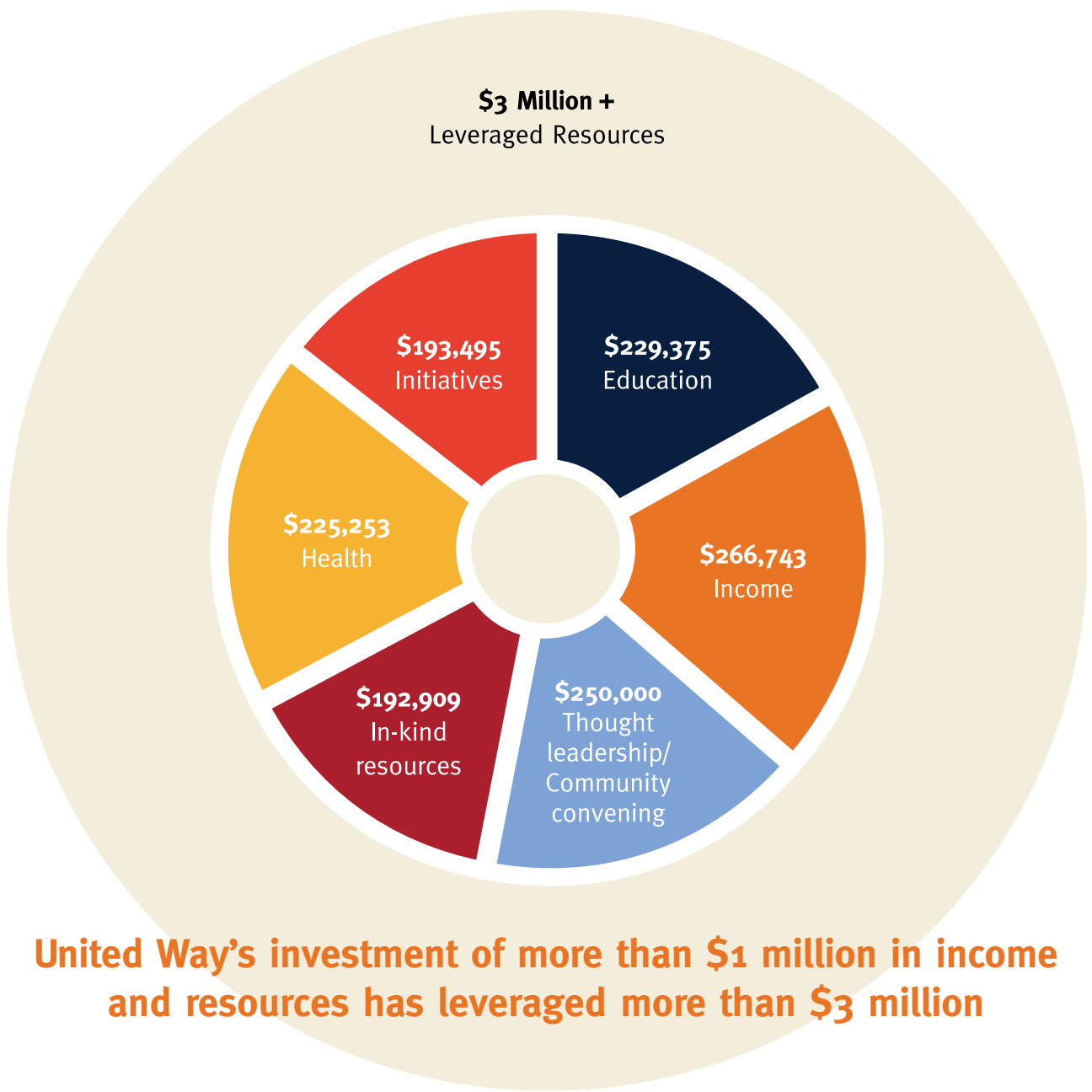
- **Suncoast Campaign for Grade-Level Reading**
- **Volunteer Income Tax Assistance (VITA)**
- **ReadingPals**
- **See Spot Read Spot**
- **Targeted Curriculum to Help Parents Succeed**
- **Building Strong Families**
- **Healthy Community**
- **Volunteers**
- **Public Policy**



Meet ALICE

Did you know 43% of our community members are struggling to make ends meet? United Way of Manatee County collaborated with United Ways throughout Florida and with our state association, United Way of Florida, to commission the ALICE (Asset Limited, Income Constrained, Employed) Report for communities throughout the State of Florida. The ALICE Report has created awareness and a call-to-action for our community about the more than 30% of our community members who are working hard every day to make ends meet and are one small crisis away from falling below the poverty line. Another 13% are not able to make ends meet on a regular basis. The Report has spurred action throughout the county from community members, businesses, nonprofits, and media and has changed how we understand our working families. UWMC has educated our businesses on small steps that they can take to engender loyalty and develop leadership that will benefit their company and the community for the long term. Businesses can no longer simply rely on business acumen to be successful; they need community acumen. To be successful they need to understand the aspirations of their community and their workforce and get involved.

*For a complete list of United Way of Manatee County's investments, visit uwmanatee.org



United Way’s investment of more than \$1 million in income and resources has leveraged more than \$3 million

Suncoast Campaign for Grade-Level Reading (SCGLR)

1 out of every 2 students in Manatee County is not reading on grade level by end of third grade

10,000 in our region are chronically absent (missing more than 18 days of school a year)



Because we know that reading proficiency at the end of third grade is one of the best predictors of school success and graduation rates, the United

Way of Manatee County formed a team of Founding Partners comprised of the United Way of Manatee County, Manatee County Public Schools, Manatee

Community Foundation and USF Sarasota-Manatee to bring the CGLR movement to Manatee County.

Now a regional effort in partnership with The Patterson Foundation and the Community Foundation of Sarasota County, SCGLR’s focus is on ensuring that our children are reading on grade level by the end of third grade, the point at which children transition from from learning to read to reading to learn. The five focus areas of the SCGLR are School Readiness, Attendance, Summer Learning, Healthy Readers and Parent/Family Engagement. Our community focus led with addressing Attendance and, with strong leadership from Manatee County Public Schools and community support, we saw significant increases this past year.

Volunteer Income Tax Assistance (VITA)

In partnership with Suncoast Community Capital, United Way of Manatee County invested in our community through VITA services. VITA volunteers provide free tax assistance for those earning \$54,000 or less and offer financial coaching for those who want help with creating spending plans and other household financial planning. Last year, more than 425 individuals and families used VITA services to infuse more than \$501,500 back into the community and become more stable so that they can lead healthy, successful lives.

ReadingPals

ReadingPals is a guided reading program that uses volunteers to read to kindergartners one hour per day, one day per week during the school year. Each student in participating classes also receives a book to take home to build their personal library. Books are also given away during special occasions such as holidays and school breaks. Volunteers read to kindergartners in five Title 1 elementary schools. More than 3,300 books were given to kindergartners.

ReadingPals kindergartners were given a license to use an application named 'Footsteps2Brilliance.' This application contains a library of hundreds of books and associated games that measured comprehension, fluency and other key reading attributes. Students were exposed to more than 40,000 words that helped their vocabulary.

See Spot Read Spot

UWMC partnered with Manatee County Public Schools' Summer Break Spot program and paired with children and families participating in the free summer meal program. Children under the age of 18 receive a meal, are read to by dedicated volunteers and are given a book to take home. More than 4,000 books were given away through See Spot Read Spot.

Targeted curriculum to help parents succeed

We know that parents are a child's first teacher. And we also know that some parents welcome mentoring when teaching their children.

This is why we partnered with Manatee Community Action Agency (MCAA) and Early Learning Coalition (ELC). Both of these agencies created a voluntary parent education and training program that is designed to be delivered at home and provides the parent with tools and uses a standard curriculum to help build pre-academic school-readiness skills.

Building Strong Families (BSF)

Consistency is critical to school success. When families struggle to stay in their homes, BSF offers guidance, training and assistance. Through BSF, 423 families received homeless prevention help and avoided losing their homes, thus keeping their children in school so that they do not fall behind. Through additional, targeted UWMC efforts, 1442 households received counseling, information, referrals and assistance to remain in housing.

Healthy Community

Children with health coverage are better prepared to learn in school and succeed in life. In 2014, there were 33 million uninsured Americans; many of them are working families. More than 8.7 million children live without health insurance – more than the total number enrolled in the first and second grades in U.S. public schools.

United Way of Manatee County has helped 145 individuals and small businesses complete their health insurance applications on the Federal Marketplace with the assistance of our Health Care Navigators.

In addition, our partnership with the FamilyWize prescription drug discount card has saved Manatee County families more than \$400,000 on prescription medication costs.

Volunteers

Volunteers have huge impact on community #thrivability!

We know that a community's ability to thrive depends upon our individual investments of time and talent as volunteers. More than 800 United Way volunteers invested 3,693 hours of service. The economic impact/value to the community of this volunteer work is more than \$79,805.13 over the past year and still going strong.

Public Policy

Lasting Change requires thoughtful advocacy.

United Way of Manatee County joined other Florida United Ways to support a consensus legislative agenda for the 2015 Florida legislative session.

While United Way supports a range of issues to advance community #thrivability, the 2015 Florida United Way Consensus Legislative Agenda represented the priorities that Florida United Ways focused on during the session. Here are the results:

Financial Stability

- **INVESTED** \$1.2 million in state funding to expand the capacity of free tax preparation and financial education programs.

Education

- **LINKED** School Readiness provider payments to early learning quality standards and the actual cost of providing quality care.
- **INCREASED** School Readiness funding by \$30 million.
- **RESTORED** funding for Florida's Voluntary Prekindergarten program to the pre-recession (2007) level of \$2,677 per child.
- **EXPANDED** access to early detection and treatment of developmental delays and disabilities by appropriating \$4 million to Help Me Grow National Center.

Health

- **APPROPRIATED** \$1.8 million in state funds to eliminate the Florida KidCare five-year waiting eligibility requirement for lawfully residing immigrant children.
- **MAXIMIZED** home- and community-based services for older adults to reduce nursing home costs.
- **REMOVED** barriers to cost-saving technologies that reduce costs and increase access to healthcare.
- **ADOPTED** a bipartisan 'Florida plan' to expand health coverage for uninsured Floridians.

Legislative Impact

\$500,000 - Appropriation for free tax preparation and financial education

\$5 Million for Early Learning Performance Funding Pilot Project

\$20 Million in School Readiness Funding

\$2.4 Million for Help Me Grow

\$1.1 million to eliminate KidCare five-year waiting eligibility for lawfully residing immigrant children

\$2.1 million in Community Care for the Elderly funding

Telehealth Advisory Council

created to explore ways to reduce costs and increase access to healthcare

United Way of Manatee County, Inc.

Consolidated Schedule of Financial Position

June 30, 2015

Assets

	United Way	UW Foundation	Total
Cash and cash equivalents	\$756,746	\$19,689	\$776,435
Restricted cash and cash equivalents	1,420	-	1,420
Investments	8,267	3,674,115	3,682,382
Receivables:			
Pledges receivable, net	478,837	-	478,837
Other	3,670	-	3,670
Unconditional promises to give – capital campaign	26,000	-	26,000
Prepaid expenses and other current assets	13,759	-	13,759
Property and equipment, net	1,609,469	-	1,609,469
Due from (to) UW Foundation	77,907	(77,908)	-
Total assets	\$2,976,075	\$3,615,897	\$6,591,972

Total Liabilities and Net Assets

Liabilities:			
Accounts payable	\$36,161	\$ -	\$36,161
Accrued compensated absences	14,944	-	14,944
Due to designated agencies	55,466	-	55,466
Deferred income	21,250	-	21,250
Note payable – current	11,872	-	11,872
Note payable – long-term	443,244	-	443,244
Total liabilities	\$582,937	-	\$582,937

Net Assets:			
Unrestricted	1,573,883	3,615,897	5,189,780
Temporarily restricted	819,255	-	819,255
Total net assets	2,393,138	3,615,897	6,009,035
Total liabilities and total net assets	\$2,976,075	\$3,615,897	\$6,591,972

United Way of Manatee County, Inc. Consolidated Schedule of Financial Position
(continued)

Revenue, Gains and Other Support

Campaign Applicable to Current Period:	United Way	UW Foundation	Total
Contributions received – current period	\$178,281	\$ -	\$178,281
Campaign revenue received for future allocation periods	1,840,906	10,000	1,850,906
Less donor designations	(88,837)	-	(88,837)
Less allowance for uncollectible pledges	(196,380)	-	(196,380)
Total campaign for future allocation periods	1,555,689	10,000	1,565,689
Total campaign	\$1,733,970	\$10,000	\$1,743,970

Net investment income (loss)	1,210	151,018	152,228
Net rental income	1,228	-	1,228
Net special events income (loss)	16,198	-	16,198
Grant income	136,350	-	136,350
Administrative processing fee income	3,539	-	3,539
Fundraising processing fee income	10,616	-	10,616
Other income	20,300	-	20,300
Total revenue	\$1,923,411	\$161,018	\$2,084,429

Allocations and Other Functional Expenses

Allocations and awards	968,685	-	968,685
Program and support services	1,045,736	60,218	1,105,954
Payments to affiliated organizations	28,242	52,080	80,322
Total allocations and other financial expenses	\$2,042,663	\$112,298	\$2,154,961

Change in net assets	(119,252)	48,720	(70,532)
----------------------	-----------	--------	----------

Net assets at beginning of year	\$2,512,390	\$3,567,177	\$6,079,567
Net assets at end of year	\$2,393,138	\$3,615,897	\$6,009,035

Audited and Approved by Shinn & Company, LLC. | March 1, 2016

Visit uwmanatee.org for full financial report.

The Tocqueville Society

The Tocqueville Society of United Way of Manatee County was established in 1995 to recognize individuals who demonstrate the same deep commitment as demonstrated by Alexis de Tocqueville. Membership in the Society is reserved for those who contribute a personal gift in the amount of \$10,000 or more annually to United Way.

Members de la Societe (\$10,000 - \$24,999)

Barney and Carol Barnett
Edward E. and Lillian H. Bishop
Foundation
JoAnne Duke
John and Beverly Putz
Phoebe Jo Shaw
Chuck and Jeannie Slater
Debbie and Steve Tapp
Herman E. and Helen H. Turner Foundation

Order de Liberte (\$25,000 - 49,999)

Eugene and Anne Beckstein
Corrine McClure
Margaret Weller

Order d'Egalite (\$50,000-75,999)

(1) Anonymous Donor
Mary E. Parker Foundation

Contributing Companies

Abbott Laboratories	Early Learning Coalition of Manatee County	IberiaBank	Oshkosh Truck Foundation, Inc
Aetna	Easter Seals Southwest FL, Inc.	IBM	Patterson Foundation
Air Products	Eaton Corporation	Insight Counseling Services Inc.	Peace River Electric
Allied Solutions LLC	Eli Lilly	ITW GSE Americas	Pierce Manufacturing, Florida Division
Amazon Smile	Equifax Inc.	JC Penney Company #1514-9	Pittsburgh Pirates
Andersen Corporation	Exelon Corporation	Johns Eastern Company, Inc.	PNC National City Private Client Group
Applied Materials HQ Group	Eye Center, Inc.	Just For Girls Academy	Publix Super Markets Inc.
AT&T Corporation	Family Partnership Center	Kellogg's Company	Raymond James & Assoc.
Bank of America	FedEx	Labinal Power Systems	Regions Bank, NA
Barnes Walker	Fidelity Bank	Lakewood Ranch High School	Ringpower Corporation
BB&T	Fifth Third Bank	Macy's	Sarasota Manatee Airport Authority
Beall's Inc.	First Manatee Bank	Manatee Chamber of Commerce	School District of Manatee County
Bishop Foundation	Florida Power & Light	Manatee Community Foundation Inc	Sheriff's Department
Blake Medical Center	FSECC	Manatee County Government	Southern Agriculture Inc
BMO Harris	Gap Giving Campaign	Manatee Memorial Hospital	St Armand's Baking Co
Bradenton Herald	Gateway Bank of SW FL	Massey Services, Inc	State Farm Insurance
Bright House Networks	General Electric	Mauldin & Jenkins, LLC	Stonegate Mortgage
Ceridian Employee Services	Gilbane Building Company	MedOne Surgical Inc	Suncoast CFC
City Life Church	Girl Scouts of Gulfcoast Florida, Inc	Morgan Stanley Smith Barney	Suncoast Credit Union
City of Bradenton	Greene, Hamrick, Perrey, Quinlan & Schermer	Mosaic Fertilizer	SunTrust Bank
City of Palmetto	Gulf Coast Legal Services	Myakka City Community Center	Tampa Bay Times
CS&L CPAs	Hancock Bank	Nationwide Insurance	Target
Delta Airlines	Honeywell	NDC Construction	The Five Pearls of Excellence
Democratic Women's Club of Manatee County	HOPE Family Services	Nordstrom	Zeta Phi Beta Sorority Inc.
Dick Johnson & Jefferson Inc.	Hultman Sensing Joshi P. A.	The Northern Trust Company	
Duke Energy Corporation		O'Reilly Automotive, Inc.	

Contributing Companies *(continued)*

The Hershey Company
Tropicana Products, Inc
Turning Points

United Technologies Corporation
United Way of Manatee County
United Way Suncoast, Tampa Bay Area

University of South Florida
Sarasota-Manatee
UPS
WalMart

Walgreens
Wells Fargo
Xerox Corporation

Pathfinder \$500-\$999

Michael Alderman
Rafael Aleman Martinez
Jahna Allen
Derrick Allred
Michael Allsworth
Gelinda Amaro
Ken & Fay Atkinson
Susan Aultman
Thomas Bailey
Maria Baldwin
Nicole Barbieri
Tommye Barie
Rodney Barnes
John Barnott
Annette Barth
Christopher Beberwyk
Katie & Tammy Becker
Tyler Beffa
Elizabeth Benac
Thomas Bennett
Vincent Benton
Francis Bergeron
Larry Berkery
Juan Bernardino
Anselmo Beserra
Dr. Janice Bevan
William Bockhorst
Cheryl Bommarito
Christina Books
Gregory J. Borden
Sherrell Bounds
Andrew Bradley
LouAnn Brekhus
Nathan Brenneman
Illyaa Brewer
Xaviera Brice
Frank Briner
Larry G. and Beverly Brown
Cindy Bryant
Joshua-Michael Buck
Cody Bunch
Briann Burbage

Thomas Burnett
Adam Burns
Donald Burton
Courtney Callaghan
Deborah Carey-Reed
Karen Carpenter
Chris Carr
Jessica Cary
Denise Catalfomo
Betty Chambliss
Davina and Craig Chapin
Stephen Chaplin
Heather Charles-Crowl
Ryan Chastain
David Checchin
Ricky Childers
Edith Chinwuba
Kyong Choe
Sean Christianson
Kevin Clayton
Robert Coblentz
Lydia Coblentz
Elizabeth Coffing
Michael and Jessica Colbert
Michael Colbert
Mark Collier
Christopher Collins
Angelina Coloneso
Tamyia Coney
Cheri Coryea
Kimberly Costello
Jane Countryman
Richard Craft
Cole Craig
Thomas and Rosanne Creed
Lisa Cross
Dawn Custer
Mr. & Mrs. Arun Daga
Arlene Davidson
Janet Davis
Daniel Deluca
Joseph DesRosier

Loraine Deters
Lisa D. Devito
Jackie Dezelski
Anthony Dimauro
Justus and Carol Doenecke
Robert Donovan
Christopher Dorn
James Downing
Daniel and Tianne Doyle
Billy Drake
Carla Drake
Rick Dreiling
Vincent Duval
Jamee-Lee Lynn Dye
Andrew Emery
Adell Erozer
Esabel Esquivel
Robert Evans
Terrence Farris
Lisa Fehling
Dwight and Donna Ferguson
Edward and Cynthia Fischer
Daniel Flenniken
Scott Flournoy
Jamie Fones
J. Forrester
Rachel Forsyth
Carole Frank
Geoff and Kelly Frantz
Reginald Funderburk
Sheryl Gardner
Steven Gartley
Jeffrey Gartman
Shane Gast
James Gelbort
William Genneken
Billy Gibbins
Maureen Gluff
Gilberto Gonzalez
Jesus Gonzalez-Lara
Christina Grabowski-Books
Nick Grasso

Daniel Green
Patti Greer
Carolyn Griffin
Arthur Haight
Vicki Hall
Frederick Hamm
Lee and Andrea Harmon
Gerry Harrington
Sheli Harrod
Debra Hart
Richard Hartley
Wesley Helton
Thomas Hemingway
Marianne Henderson
Brett Henry
Victor Herbert
Donald Hermey
Mindy Hester
Herbert Hewitt
Michael Hill
James Hird
George and Marlane Hiskes
Leeann Hoffman
David Holt
Linda Horn
Greg Howard
Donald Howard
William Howison
Carter Hubbs
Rodney Jackson
Stanley Stout
Fay Johnson
James Johnson
Bryce Johnston
James Jones
Richardo Jones
Randall Josey
Vishal Kakkad
Christina Kavanagh
Patti Keane
Patrick Kennedy
Judith Kesler

Pathfinder \$500-\$999 *(continued)*

Kelly Kiefer	Justin McGlaughlin	Jagjit and Daljit Ranajee	Karen Stewart
Alexander Klotz	Robert and Peggy McKelvey	Boyd Randolph	Keith Storey
Charles Koenigeter	James McKillip	Brennen Redcay	Joseph Stortz
Belinda Koon	Leroy McKinney	Charles Reese	Cindy Stott
Donald Krause	Lorna McNutt	Melodie Rich	Drew Johnson
Cameron Krstonich	Connie Mederos-Jacobs	Daniel Rich	Augusto Strubbe
Susan Kruse	Edgar Mendoza	Donald Richardson	Camille Suarez
Kevin Kulakowski	Robin Meyer	Ellen Richardson	Joshua Suchovsky
Shari Kurutz	Dustin Milner	Julie Rogers	Richard Sweitzer
Priscilla Labrecque	Jerome Minton	Sawyer Rosier	Janice Taylor
Jonathan Lallement	Dr. and Mrs. Harvey S. Mishner	Michael Roskovich	Terry Josephine Terry
Christopher Lance	Darin Moore	William Russo	Faron Thomas
Michele Langevin	Trevor Moore	Fredrico Sanchez	Gerhard Toth
Gregg D. Lawson	Christina Mori	Cindy Santiago Villarraja	Stephen Treston
Du Le	Cynthia Morris	Henry Sauls	Dawn Turgeon
Arne Lemke	Amanda Mota	Bradley Scarbrough	Dimitrios Vafeas
Diana Linville	David Mowrey	Michael Schaefer	Tamara Varckette
Peter Lofquist	Haylee Ocello	Dan Schlandt	Michael Wade
Jan Longo	John Oliveira	Ronald Schulhofer	Danielle Walker
Anthony Lovesky	Robin O'Neal	Mary Schultz	Brad Washio
Steven Lowder	John Osborne	Nicole Seaman	Brian Watterson
Tina Lubrano	Seth Palmer	Alan Sedlock	Bill Webster
Matthew Luttrell	John Pari	Brandon Seeley	Jennifer Weiss
Laurel Lynch	Brett Parker	Mary Jo Seidner	Christopher and Brenda Whaley
Timothy MacMunn	Marguerite Parsons	Nonato Lari Maia Shicks	Thomas Wiegele
Heather MacMunn	Stephanie Patete	Thomas Sieczkowski	Robert Wilkey
Michael Maddaloni	Ana Pawloski	Edward Singletary	John Williams
Sarah Makeever	Sandra Pears	Robert Sismour	Michelle Williams
Nathanael Manassa	Jose Perez	Suzanne Smith	Sarah Williams
James Martz	Stephanie E. Petta	John Smith	Trevor Williams
Anita Mason	Dr. Carole Pettijohn	Gregory Smith	Cheryl Woeltjen
Michael Mathews	Chris and Michelle Phillips	April Smith	Anthony Yassa
Jose Matias	Michael Phillips	Richard Smith	Jackie Yeagley
Gaylen Mattas	Maureen Plovnick	Shamya Snipes	Charlyn Young
Tammy May	Marshall Poelsma	Lisette E. Sowerby	Patricia Zato
Kimberly McCallam	Blanche Preston	Donald Spencer	Jennifer Zavadil
Mark McDonald	Ricky Profit	Raymond Spicochi	Kevin Zenobi
Francine McDonald	Wanda Proveaux	Robert Stanell	Jason Zimmerman
Robert McDonald	Michael Prunier	Larry Statkus	
Dave McDowell	Robert Pryor	William Stenger	

Keel Club \$1,000-\$9,999

Paul Alexander	Robert and Victoria Bartz	Josh Belvin	Angelia Boatwright
Christina Allman	Stewart and Shawn Batts and Family	Lewis Benner	W. Bruce Body
Dave Alves	Robert M. Beall, II	Kayley and Madison Bennett	Todd Bohlmann
Cindy Anderson	Beverly Beall	Amine Bensaid	Chris and Trudy Boyd
Van Baker	Earl Beck	The Bierds Family	Deenae Boyd
Michael Bakken	Bruce and Lisa Beckstein	Robert Blaikie	John F. Boyles
Terry and Debbie Ball	Bronwyn Beightol	David Blair	Priscilla Brown

Keel Club \$1,000-\$9,999 *(continued)*

Philip and Susan Brown	Josh Hand	Ron and Jeanette Mills	Megan and Greg Smith
Megan Brown	Nicole Hanzlik	Kallie Morand	Chris and Wendy Smith
Johnny Brown	Missy Hartley	Maureen Morris	Steven Smith
Torrey Burden	Cassidy Hartley	Darren Morrison	Gary Smith
Deborah Burnett	Cassidy Hastley	Renzo Moschini	Dennise Smith-Berger
Maria Caldas	Tracy and Sam Hatley	Tiara Moten	Sue Spinelli
Joseph Calinski	John and Mary Hendrick	Dave and Carol Mousseau	David and Vicky Sprague
Todd Chastain	Jaquelyn Henline	Martha Muegel	Peter Sprague
Bradley Collins	Sandy Hightower	Susan, Alex, and Carlie Murphy	Eliza Steffe
Rachel Copeland	Candice Horne	Lorna Nagler	John Steger
Michael Costa	Diane Huntley	Nelson Family	Bart Stevens
Branden Craft	Edwin J. Hunzeker	Tessa Nobles	Ann Stewart
Terry Crate	Eric Ipe	Jordan Norman	Kyle and Erica Stewart
Robert Dapper	Darrell Jackson	Michael Ohlman	Robert Sullivan
L Davenport	Scott F. Jackson	Dick and Jane Olson	Bruce Taylor
Audrey Davis	Barbara and Keith Johnson	Larry O'Maley	Joe and Kim Taylor
Oscar De Leon	Diane E. Johnston	William Ourano	Rosemary Tempesco
Louis and Angie Debrosse	Jay Jay Jones	Johnny Owen	Christian A. Timol
Ane-Grethe and Rory Delaney	Justin Jones	Moses De Jesus Jose Pacheco	Wedward Thierry
Stephanie Delatorre	Ryan and Amanda Keeney	Daryl Page	Mr. & Mrs. Robert H. Thompson
Douglas and Dianne DeLong	John Kendall	Clifford Pardue	Jonathan Thoresen
Alan Dormeyer	Ryan Patrick Kennedy	Charles Peabody	Christian A. Timol
Cindy and Dwayne Denison	Edith Kennedy	Christopher Peacock	Christopher Torrey
Mary Dertinger	David Kennedy	Anthony Pearcey	James Troxell
Vernon DeSear	Sivilay Keovilay	Joshua Perry	Kenneth Truluck
Rae Dowling	Anthony Kinshaw	Sean and Heather Pettey	Mr. & Mrs. Robert G. Turner, Jr.
Nicole Downing	Bruce W. and Dawn Kitchner II	Christopher Philips	Terry and Tami Uphaus
Karen Droz	Erika Kolb	Samantha and Colten Planitz	Chris Ward VanAlstyne
Paul and Jan Drummey	Stephanie Kraft	Paul Plotkin	Sonya VanDerzee
Kenneth Duncan	Katie Kunze	Judith Pohlman	William Vickers
Justin Egles	Shannon Lanyon	Branko Popovic	Alan Wagar
Jeff Elsberry	Christopher Lavigne	Gregory J. Porges	Adron and Gayle Walker
Christopher English	Dave Leadingham	Mr. & Mrs. Glenn Potts	Eva Walker
David Esquivel	Thomas LeFebvre	David Price	Thomas Waters
Kelsey Falcone	Geren Leon	Michael Ransom	Elizabeth Watkins
Tara Farley	Daniel Love	Bruce and Andrea Reid	Swanisha Webster
Jose Fernandez	Rebecca Lowe	Giobanie Richtfort	Amanda West
Kevin Ferry	John Lund	Dennis Riddlemoser	Geoffrey Westervelt
Lisa L. Ferry	Michael Lunday	Gary J. Romano	Pat White
Jose Flores	Marilyn Lyons	Steven and Carolyn Roskamp	Destiny White
Kelly S France	Candy Maginness	Madge Rowlett	Eric Whitman
Robert Galletta	Terri Mann	Jack and Frances Rynerson	The Wilkinson Family
Samael Gamboa	Dave and Brenda Maraman	Serena Samuels	Denise Williams
Neal Gerdeman	Tom and Yvonne Markiewicz	Michele Santacrose	Karen Windon
Laura Gerken	Stephen Marrero	Jonathan Schaeffer	Phil Winefordner
Hannah and Kyle Glochick	Adrian Martinez	Alma and Dean Schmidt	Michelle Wismer
Sheila M. Godreau	David Massey	Dreux Schoenbeck	Alexander Wood
Greg Golden	David McIntosh	Tanner Sheppard	Paul Young
Lynne Goneau	Nick McPherson	Sharon L. Shinham	Donald and Melinda Yow
Bradley Gray	Conrad Meade	Kamaljit Singh	Judy Zampino
James and Janet Green	Hunter Mendonca	Chris and Wendy Smith	Chris Ward VanAlstyne
Caleb and Michele Grimes	Jim Mercer	Mr. & Mrs. Steven E. Smith Sr	Alan Dormeyer
Anna Grinchuk	The Meyers Family	Barbara Smith	

Board of Directors & Staff

Board of Directors

Jackie Barron
The Mosaic Company

Cindy Denison
Gateway Bank of SW Florida

Jacki Dezelski
Manatee Chamber of Commerce

Ted Ehrlichman
CareerSource Suncoast

A. J. Grant
Pittsburgh Pirates/
Bradenton Marauders

Dr. Diana Greene
School District of
Manatee County

Tim Henning - **Vice Chairman**
Publix

Ed Hunzeker
Manatee County

Anne Lee - **Chairman**
Sunshine Bank

Cliff McDerment
Tropicana

Connie Mederos-Jacobs
Law Offices of
Connie Mederos-Jacobs

Stephanie Petta
Petta Marketing Group

Neil Phillips
Visible Men Academy

Dr. Sandra Stone
USF Sarasota-Manatee

Debbie Tapp
Volunteer

Bob Thompson - **Secretary**
Volunteer

Dan Vigne
Northern Trust Bank

Bill Webster
BEALLS, Inc.

Denise Williams-**Treasurer**
Hancock Bank

Staff



Philip Brown
President



Bronwyn Beightol
Senior Vice President



Ken Atkinson
VP, Operations & CFO



Bruce Meyer
Community Engagement
Director



Carolyn Griffin
Community Impact Director



Katie Becker
Resource Development
Director



Cassandra Decker
Community Engagement
Coordinator



Whit Langdon
Communications Specialist



Karen Dickerson
Administrative
Coordinator



Arlene Lugo
Financial Clerk



Kimberly Hinkle
Information Specialist



Diane Pluchino
Information Specialist

(Shared with Manatee Chamber of Commerce)

the 1990s, the number of people in the world who are poor has increased from 1.2 billion to 1.6 billion.

There are a number of reasons for this. One is that the world population has increased from 5 billion to 6 billion. Another is that the number of people who are poor has increased in many of the world's poorest countries. This is because of a number of factors, including the fact that many of these countries have experienced economic stagnation or decline, and that many of them have high population growth rates.

There are a number of ways in which we can help to reduce the number of people who are poor. One way is to help to improve the economic situation in the world's poorest countries. This can be done by providing them with technical assistance, and by helping them to attract foreign investment.

Another way is to help to improve the living standards of the poor in the world's poorest countries. This can be done by providing them with access to basic services, such as education and health care, and by helping them to improve their housing conditions.

There are a number of other ways in which we can help to reduce the number of people who are poor. For example, we can help to improve the efficiency of the world's agricultural sector, and we can help to improve the world's energy supply.

It is important that we take action to reduce the number of people who are poor, because this is one of the most serious problems facing the world today. If we do not take action, the number of people who are poor will continue to increase, and this will have a serious impact on the world's economy and on the lives of the poor.

There are a number of things that we can do to help to reduce the number of people who are poor. We can help to improve the economic situation in the world's poorest countries, we can help to improve the living standards of the poor, and we can help to improve the efficiency of the world's agricultural sector and the world's energy supply.

It is important that we take action to reduce the number of people who are poor, because this is one of the most serious problems facing the world today.

the 1990s, the number of people in the world who are poor has increased from 1.2 billion to 1.6 billion.

There are a number of reasons for this. One is that the world population has increased from 5 billion to 6 billion. Another is that the number of people who are poor has increased in many of the world's poorest countries. This is because of a number of factors, including the fact that many of these countries have experienced economic stagnation or decline, and that many of them have high population growth rates.

There are a number of ways in which we can help to reduce the number of people who are poor. One way is to help to improve the economic situation in the world's poorest countries. This can be done by providing them with technical assistance, and by helping them to attract foreign investment.

Another way is to help to improve the living standards of the poor in the world's poorest countries. This can be done by providing them with access to basic services, such as education and health care, and by helping them to improve their housing conditions.

There are a number of other ways in which we can help to reduce the number of people who are poor. For example, we can help to improve the efficiency of the world's agricultural sector, and we can help to improve the world's energy supply.

It is important that we take action to reduce the number of people who are poor, because this is one of the most serious problems facing the world today. If we do not take action, the number of people who are poor will continue to increase, and this will have a serious impact on the world's economy and on the lives of the poor.

There are a number of things that we can do to help to reduce the number of people who are poor. We can help to improve the economic situation in the world's poorest countries, we can help to improve the living standards of the poor, and we can help to improve the efficiency of the world's agricultural sector and the world's energy supply.

It is important that we take action to reduce the number of people who are poor, because this is one of the most serious problems facing the world today.

the 1990s, the number of people in the world who are poor has increased from 1.2 billion to 1.6 billion.

There are a number of reasons for this. One is that the world population has increased from 5 billion to 6 billion. Another is that the number of people who are poor has increased in many of the world's poorest countries. This is because of a number of factors, including the fact that many of these countries have experienced economic stagnation or decline, and that many of them have high population growth rates.

#thrivability



**United Way of
Manatee County**

Bradenton | 1701 Tamiami Trail, Bradenton, FL 34205

Lakewood Ranch | 4215 Concept Court, Bradenton, FL 34211

941.748.1313 | uwmanatee.org